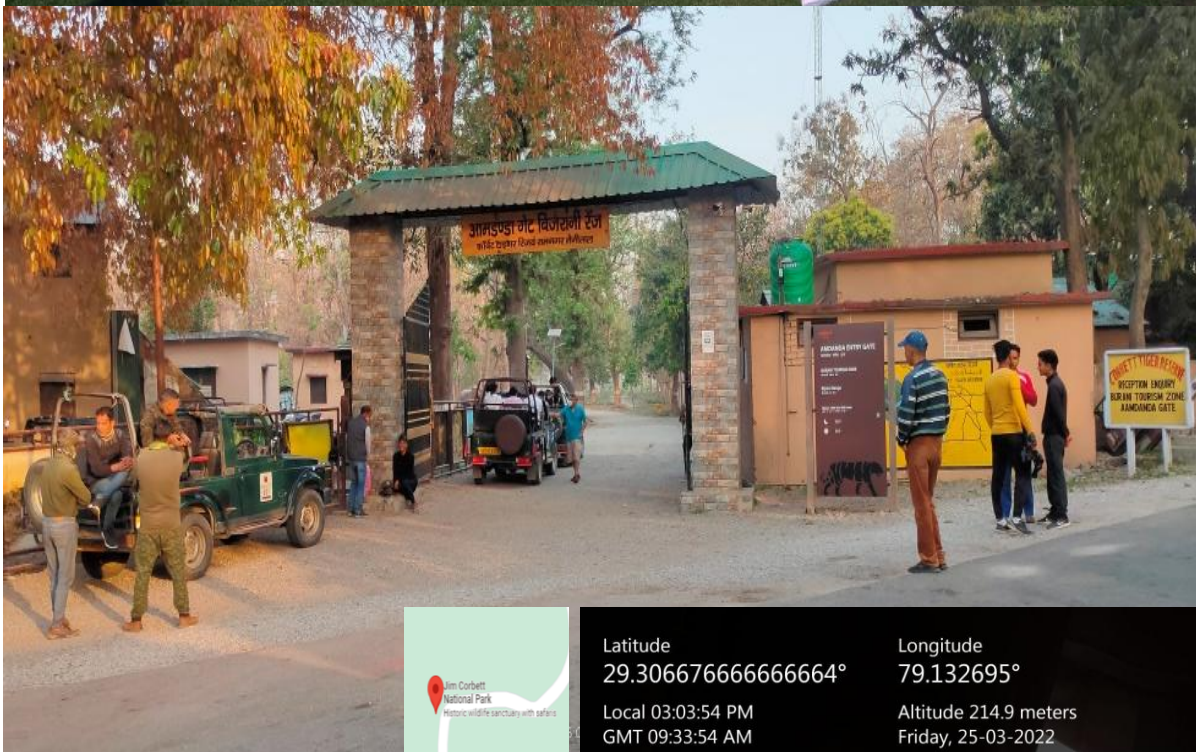


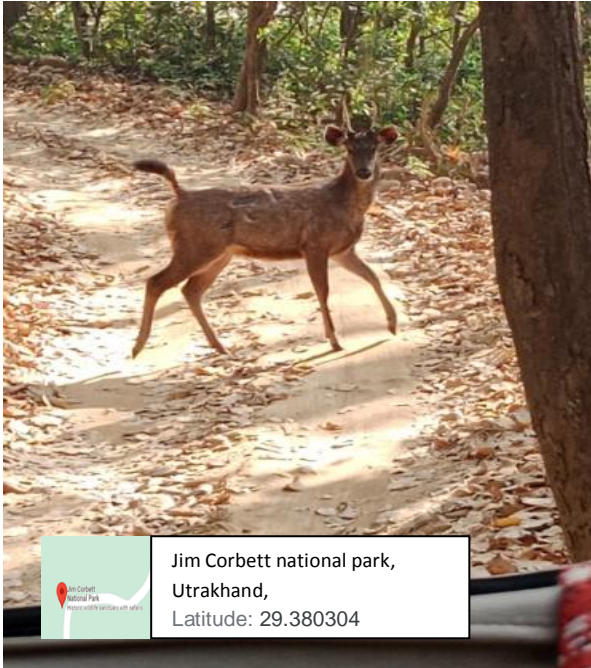
PG DEPARTMENT OF ZOOLOGY

An Educational Tour to Jim Corbett National park Nainital, Utrakhand

(24st to 27rd March, 2022)

The PG department of Zoology organised an educational trip to Jim Corbett National Park Nainital, Utrakhand for graduation and post-graduation students where they visited the national park and tiger reserve. The main motive of this trip was to show animal diversity to students. This trip also provided a chance to students to witness the wild species roaming freely in jungle. Furthermore, the glorious view of rare accumulation of wild animals at park gave an enthralled experience to students. Students also visited Nainital lakes which showed that along with wildlife, natural beauty also hold a massive significance. A group of 55 students and teachers was part of this tour.





Jim Corbett national park,
Utrakhand,
Latitude: 29.380304



Jim Corbett national park,
Utrakhand,
Latitude: 29.380304



Nainital, Utrakhand, Latitude: 29.380304
Longitude: 79.463570, 26/03/2022

Palms Grove
 Unnamed Road, Uttarakhand 263140, India

Latitude: 29.307961666666664° Longitude: 79.13110499999999°
 Local 07:19:41 PM Altitude 286.3 meters
 GMT 01:49:41 PM Friday, 25-03-2022

GPS Map
 Camera Lite